

Addressing Water's Molecular Cluster Architecture:

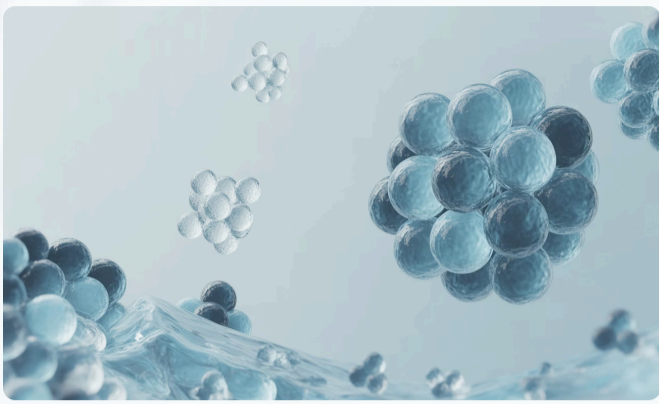
For Unlocking a Sustainable Revolution with Global Benefits

Water is far more than a passive solvent—it is a molecular architect, governing the dissolution, transport, and uptake of minerals, nutrients, and chemical constituents. This capability arises from water's polarity and its capacity to form hydrogen bonds, enabling interaction with a wide spectrum of compounds across biological, agricultural, and industrial systems. Beneath this apparent simplicity, however, lies a structural dimension with far-reaching consequences.

Water Molecule Clusters- *Dynamic by Nature*

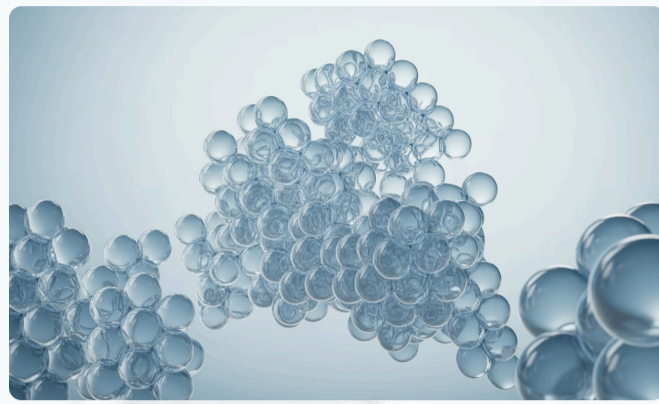
Water molecules form hydrogen bonds with neighboring molecules, creating intricate three-dimensional networks known as molecular clusters. These clusters are dynamic and variable in size, ranging from a few molecules to hundreds, depending on environmental conditions such as energy input, flow dynamics, and surrounding chemical context, significantly impacting water's functional efficiency.

Variable Size



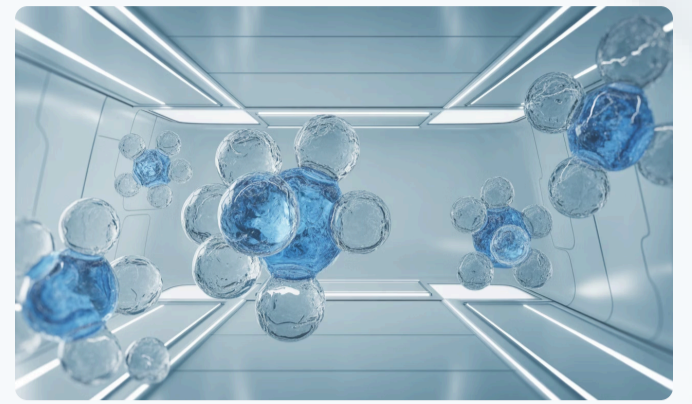
Clusters continuously fluctuate in diameter as water molecules associate and dissociate. Small clusters may contain just 4-6 water molecules, while larger aggregates can encompass dozens.

Shifting Architecture



The spatial arrangement of water molecules constantly reorganizes. What begins as a symmetrical shell may temporarily distort into asymmetric configurations based on thermal motion and environmental factors.

Charge Distribution

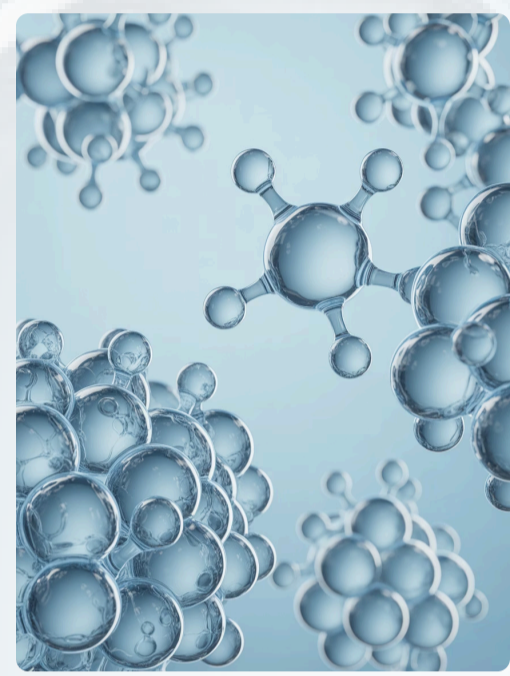


The electrical charge doesn't distribute evenly across the cluster. Localized charge concentrations create temporary dipoles that influence how the cluster interacts with other molecules and surfaces.

Three Keys to Bioavailability

This clustering behavior directly influences key physical and chemical properties of water, including:

- **Density and thermal behavior**
- **Viscosity and flow characteristics**
- **Solvent efficiency and molecular diffusion**

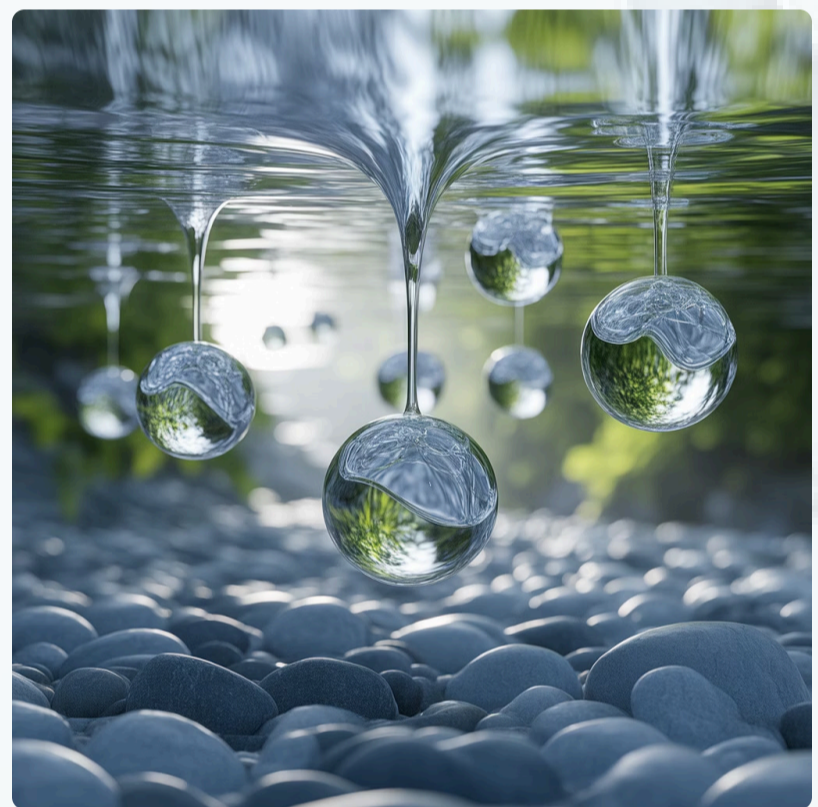


Dynamically Active Surface Water

In its natural, flowing state, surface water is continuously influenced by Earth's magnetic field, solar radiation, atmospheric exchange, and physical turbulence. These forces maintain water in a dynamically responsive condition, characterized by smaller, more transient molecular clusters.

This dynamic state enhances water's solvent power, mobility, and biological productivity.

- **Efficient solvation and nutrient transport**
- **High bioavailability for cellular uptake**
- **Smooth flow with reduced energy requirements**
- **Deep soil percolation maximizing root access**
- **Optimal utilization of fertilizers and chemicals.**

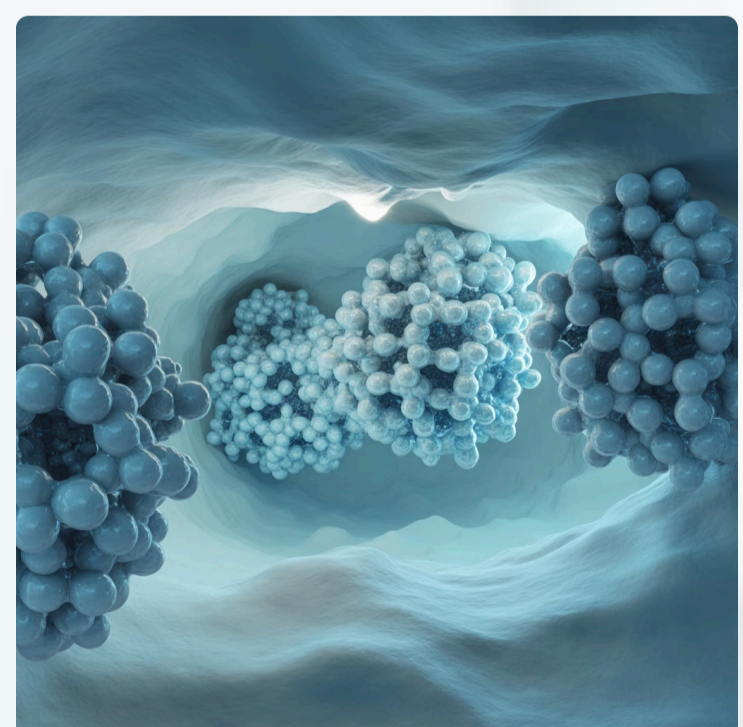


Static Ground Water Limitations

The **difference** between **dynamic surface water** and **static groundwater** is not merely positional—it is **molecular**. In deep aquifers, isolated from external energizing forces, **water molecules** tend to organize **into larger, more stable clusters**, often comprising tens to hundreds of molecules.

These **enlarged clusters** reduce **molecular mobility, diffusion, and solubility**, diminishing water's functional efficiency and leading to:

- **Poor solvation leading to nutrient deficiencies**
- **Low cellular uptake and hydration efficiency**
- **Increased pumping energy and operational costs**
- **Surface runoff and excessive evaporation**
- **Fertilizer and chemical wastage**



These clustering effects expose hidden inefficiencies that cascade across essential applications—from irrigation and industrial cooling to cellular hydration and soil remediation. Understanding water's molecular behavior is therefore not merely academic; it is foundational.

Without this insight, public health strategies, nutritional science, and infrastructure planning risk overlooking a silent yet powerful variable—one that governs water's functional performance at both biological and system scales.

Revitalizing Water Through Magnetic Water Treatment for Optimal Efficiency

Magnetic Water Treatment revitalizes water by influencing its intermolecular hydrogen-bonding dynamics, leading to a more ordered and functionally responsive aqueous structure. Exposure to controlled magnetic fields reorganizes water at the molecular level, reducing excessive clustering and promoting more coherent hydration environments. This structural refinement enhances water's capacity to solvate, transport, and deliver dissolved ions with greater efficiency across biological and agricultural systems.

By acting on water's physical organization rather than its chemical composition, Magnetic Water Treatment operates as a systems-level intervention—one that aligns the structure of water with the requirements of mineral mobility, membrane permeability, and metabolic utilization. In this way, magnetically treated water functions as a more efficient carrier medium, supporting hydration processes with greater precision and consistency than conventionally structured water.

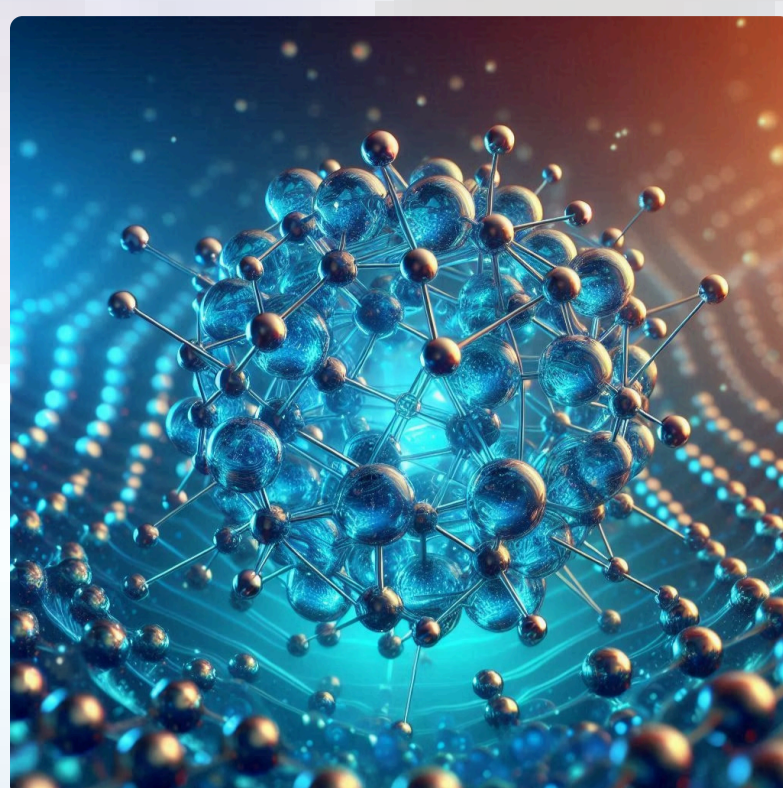
How Water Structure Governs "Mineral Bioavailability"

When minerals dissolve in aqueous environments, they do not exist as isolated ions moving independently. Instead, they organize into dynamic, structured entities known as *hydrated complexes*—layered arrangements of water molecules that surround each ion and define its effective size, charge distribution, and mobility. Far from being a theoretical detail, this hydration architecture directly governs how minerals behave in biological and agricultural systems.

Hydration Shells

The solvation function occurs when water molecules orient themselves around ions, forming "hydration shells." For example:

- Positively charged ions (cations) like potassium (K^+) attract the negatively charged oxygen end of water molecules.
- Negatively charged ions (anions) such as nitrate (NO_3^-) attract the positively charged hydrogen end of water molecules.
- Hydration shells dynamically fluctuate in size as water molecules associate and dissociate. Smaller shells may involve as few as 4–6 water molecules, while larger configurations can encompass several dozen, depending on ionic charge density and surrounding conditions.



Three Keys to Bioavailability

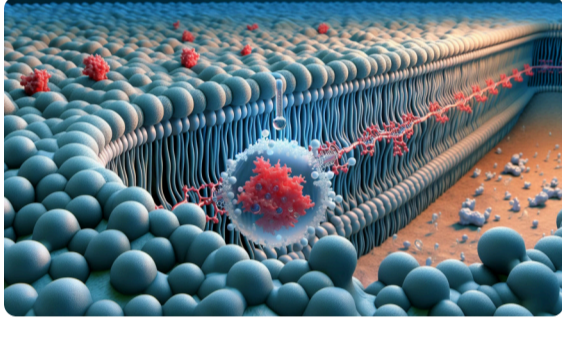
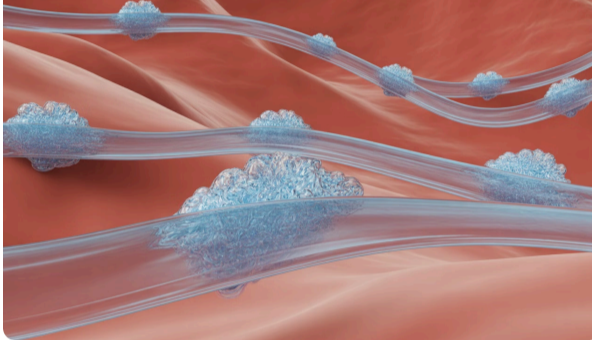
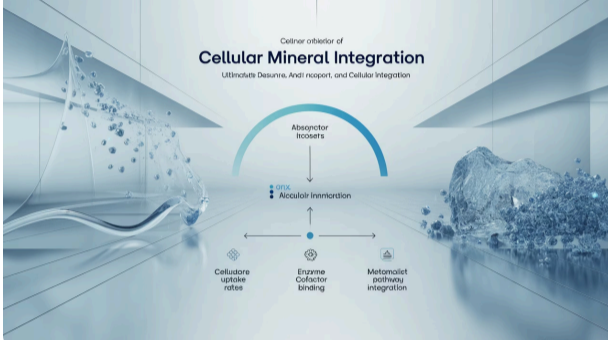
The journey from an ingested mineral to a functional cellular component unfolds across multiple physiological checkpoints. These checkpoints are not independent stages, but interconnected expressions of a common underlying factor:

The physical configuration of the hydration shell surrounding each mineral ion. Hydration shell size, geometry, and charge distribution collectively determine whether a mineral progresses efficiently from absorption to cellular utilization—or is excluded at one of these critical interfaces.

Because mineral ions remain continuously associated with structured water, the way water organizes around ions directly influences outcomes ranging from intestinal absorption to intracellular metabolism. This structural dependency explains why mineral supplementation is not simply a matter of increasing dosage; **bioavailability is governed by form, not quantity.**



Understanding hydration cluster behavior is therefore essential across disciplines, from nutritional science and pharmaceutical formulation to agriculture and biological systems design.

Membrane Permeability	Transport Efficiency	Bioavailability
 <p>Can it cross cell membranes?</p> <p>To enter cells, mineral clusters must be small and appropriately charged. They either pass directly through lipid bilayers or fit into membrane transport proteins.</p> <ul style="list-style-type: none"> A magnesium cluster with six water molecules might pass easily A seven-molecule variant may be rejected due to size constraints 	 <p>How easily can it move through the body?</p> <p>Even after crossing the intestinal barrier, minerals must navigate blood plasma, extracellular fluid, and potentially multiple tissue layers. Smaller, more streamlined clusters encounter less resistance during transport.</p> <ul style="list-style-type: none"> Reduced hydrodynamic drag Lower binding to plasma proteins Faster diffusion rates 	 <p>What proportion is actually usable by cells?</p> <p>The ultimate measure combines absorption, transport, and cellular integration. Only minerals that successfully complete all steps contribute to physiological function. Cluster properties influence success at every stage.</p> <ul style="list-style-type: none"> Cellular uptake rates Enzyme cofactor binding Metabolic pathway integration

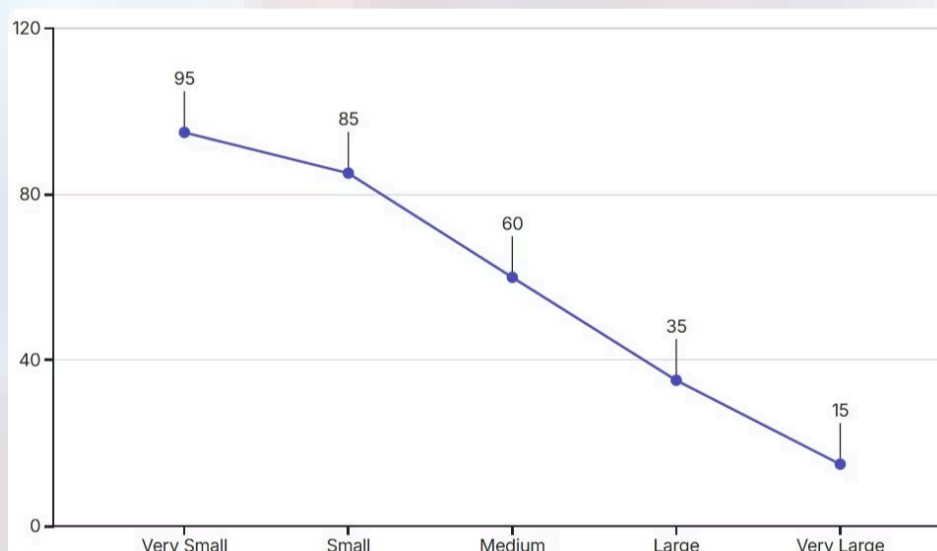
These three factors are **interconnected**—improving one often **enhances the others**. For instance, a cluster configuration that increases **membrane permeability** typically also improves **transport efficiency**, creating a compounding effect on **overall bioavailability**. This synergy explains why even modest improvements in **cluster optimization** can yield substantial benefits in **nutritional** outcomes.

Why Size Matters

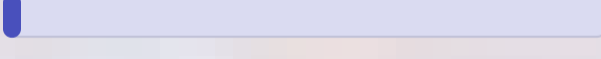


Smaller clusters consistently outperform larger ones across all three checkpoints. This inverse relationship is rooted in biophysics:

- Less steric hindrance at membrane interfaces
- Lower energy cost for partial dehydration
- Faster diffusion through viscous fluids
- Easier access to enzyme active sites and transport proteins

Conversely, larger clusters face multiple disadvantages. Their expanded hydration shells increase the energy barrier for membrane crossing. Their greater mass reduces diffusion rates through viscous biological fluids. Their size prevents them from fitting into many transport proteins and enzyme active sites, effectively excluding them from critical biochemical pathways.



The graph above illustrates the inverse relationship between cluster size and biological activity. As hydration shells expand, activity drops precipitously—not linearly, but exponentially.

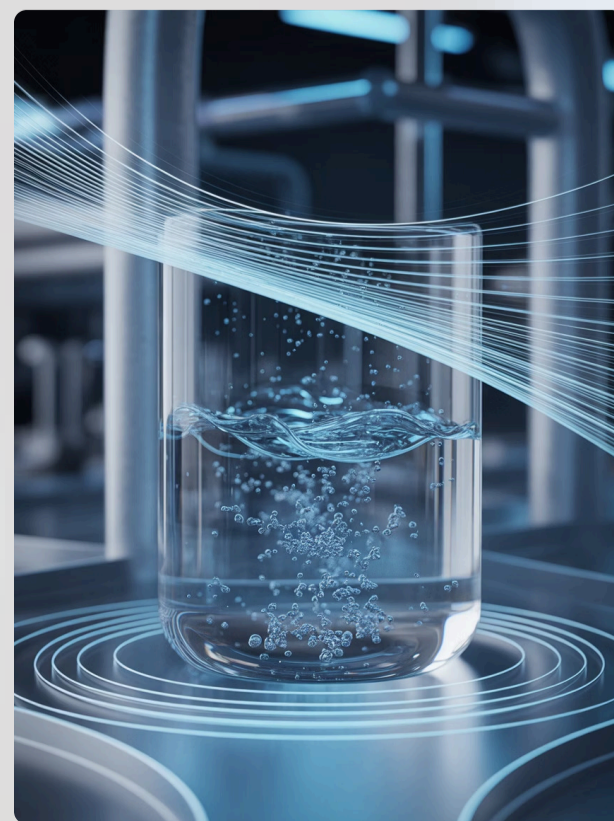
 <p>3x</p> <p>Absorption Rate</p> <p>Small clusters can be absorbed up to three times more efficiently than large clusters</p>	 <p>65%</p> <p>Size Reduction</p> <p>Decreasing cluster diameter by 65% can double bioavailability in some mineral systems</p>	 <p>5nm</p> <p>Optimal Range</p> <p>Most biologically active clusters measure between 2-5 nanometers in effective diameter</p>
--	---	--

Example: In agriculture, the number of water molecules forming hydration shells around ions significantly influences how efficiently these ions move through water, affecting their availability as plant nutrients and overall water-use efficiency."

Nutrient Ion	Hydration Shell Size	Mobility in Water	Plant Uptake Efficiency
Potassium (K^+)	6-8 water molecules	High	Moderate to High
Calcium (Ca^{2+})	8-12 water molecules	Moderate	Low to Moderate
Nitrate (NO_3^-)	4-6 water molecules	Very High	High
Phosphate (PO_4^{3-})	10-14 water molecules	Low	Very Low

Optimizing Mineral Bioavailability through Magnetic Water Treatment

- Reorganizes water's hydrogen-bonding network into smaller, more ordered hydration structures
- Reduces excessive water clustering and improves molecular coherence.
- Enhances mineral solvation and ion mobility in aqueous environments.
- Lowers the energetic barrier to mineral ion release from crystalline lattices.
- Supports efficient transport of mineral ions through biological fluids.
- Facilitates smoother passage across interstitial spaces and cellular interfaces.
- Collectively improves mineral bioavailability and cellular uptake.



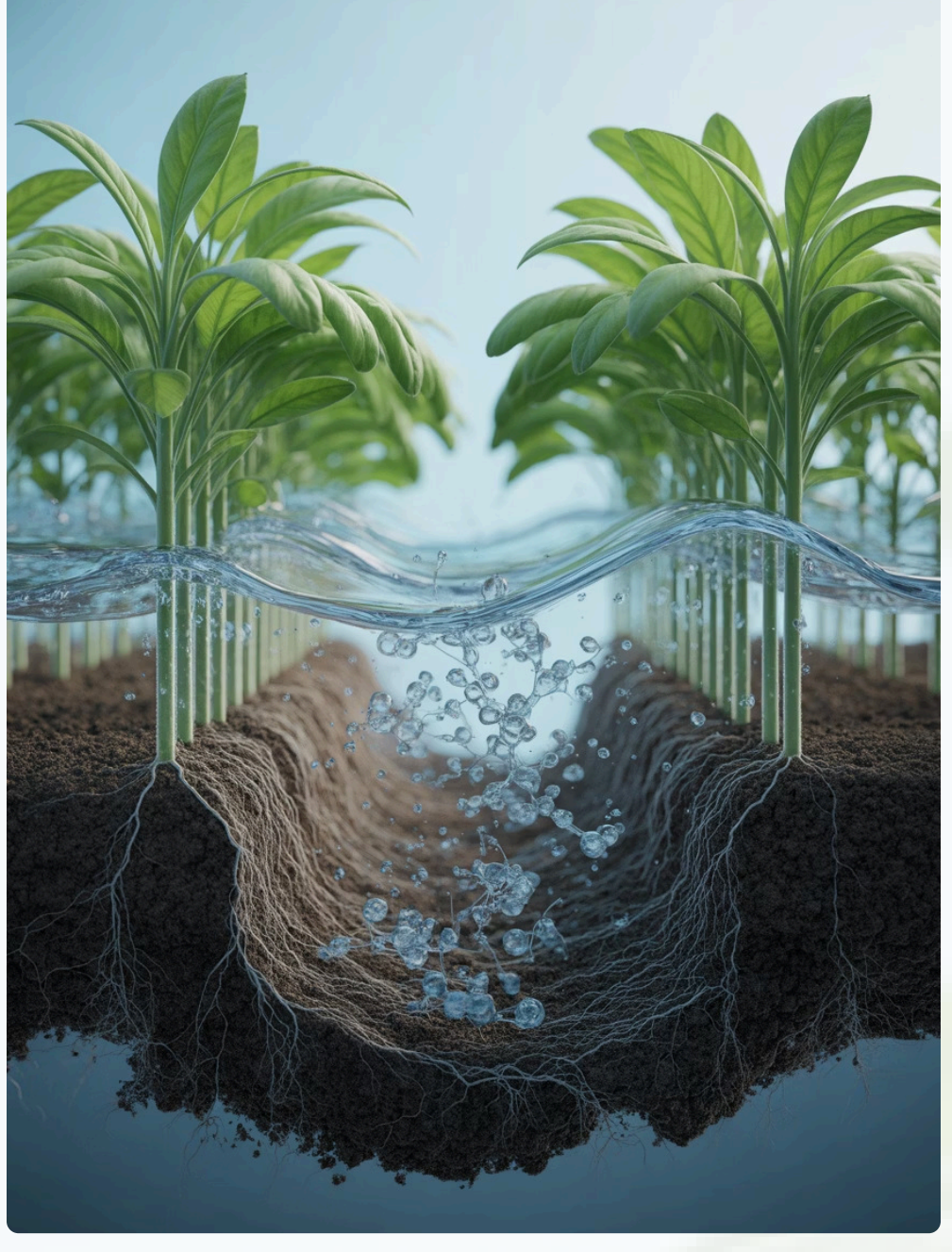
The future of mineral supplementation may lie not in discovering new minerals, but in **optimizing the aqueous structures** of minerals, we've used **for centuries**. **Magnetic treatment** influences the organization of **these hydration shells, refining cluster size and stability**.

How Molecule Clusters Affects Agricultural Productivity

Water, the lifeblood of agriculture, doesn't always behave as a simple, uniform liquid. Its molecules naturally form dynamic clusters through hydrogen bonding, creating transient networks that can profoundly influence plant life cycles, ultimately impacting crop yields and overall agricultural productivity. Understanding and managing these molecular interactions is becoming increasingly critical for sustainable farming.

Key Mechanisms of Impact

- Crop Yield Variations**
 Inconsistent water availability and nutrient uptake due to clustering can directly lead to reduced and variable crop yields, impacting food security and farmer livelihoods.
- Plant Stress Responses**
 Plants under suboptimal water and nutrient conditions exhibit stress, leading to stunted growth, reduced photosynthesis, and increased susceptibility to pests and diseases.
- Irrigation Efficiency Losses**
 Ineffective water penetration and absorption translate to wasted irrigation water, increasing operational costs and environmental impact, particularly in drought-prone regions.
- Soil Health Effects**
 Poor water-soil interaction can degrade soil structure over time, affecting microbial activity, aeration, and overall long-term soil fertility.



Structured Magnetized Water

Redefining Sustainable Agriculture

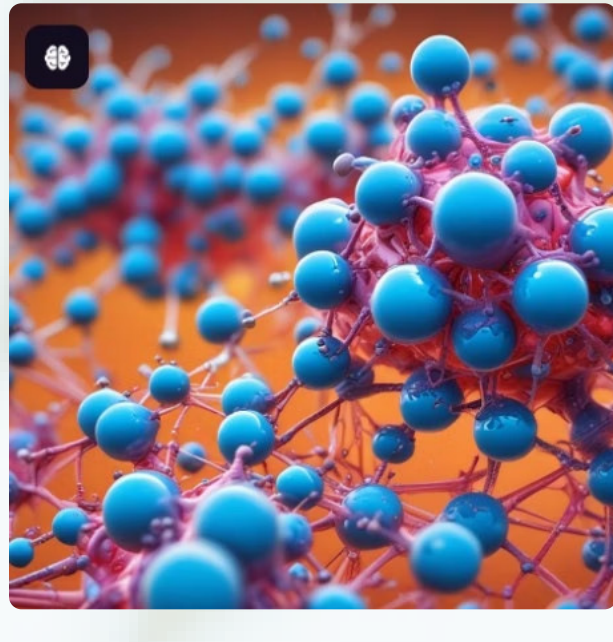
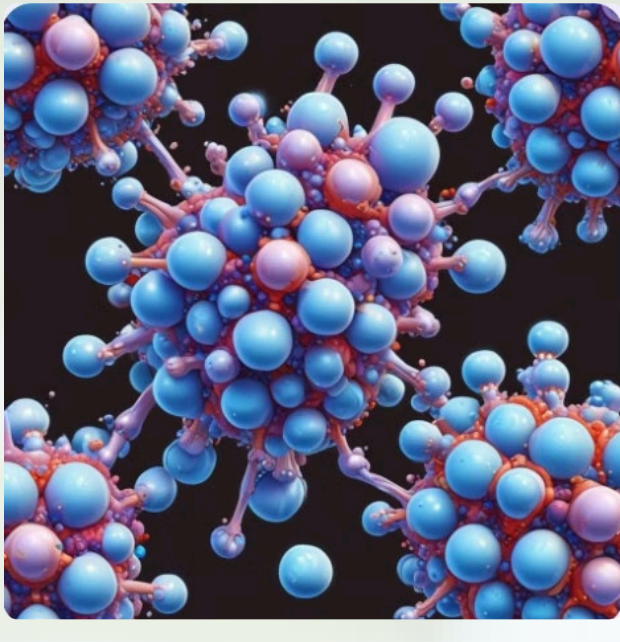
Magnetic Water Treatment recreates in water—regardless of its source—the same natural process that occurs in moving streams and rivers as they interact with the Earth's magnetic fields, transforming it into structured water that plants and soil organisms have evolved to rely on.

By maximizing the biological utility of every drop, MWT enables production systems to achieve more with — less water, less fertilizer, less energy, less environmental impact.

In water-limited regions, this efficiency gain can be the difference between viable agriculture and abandonment

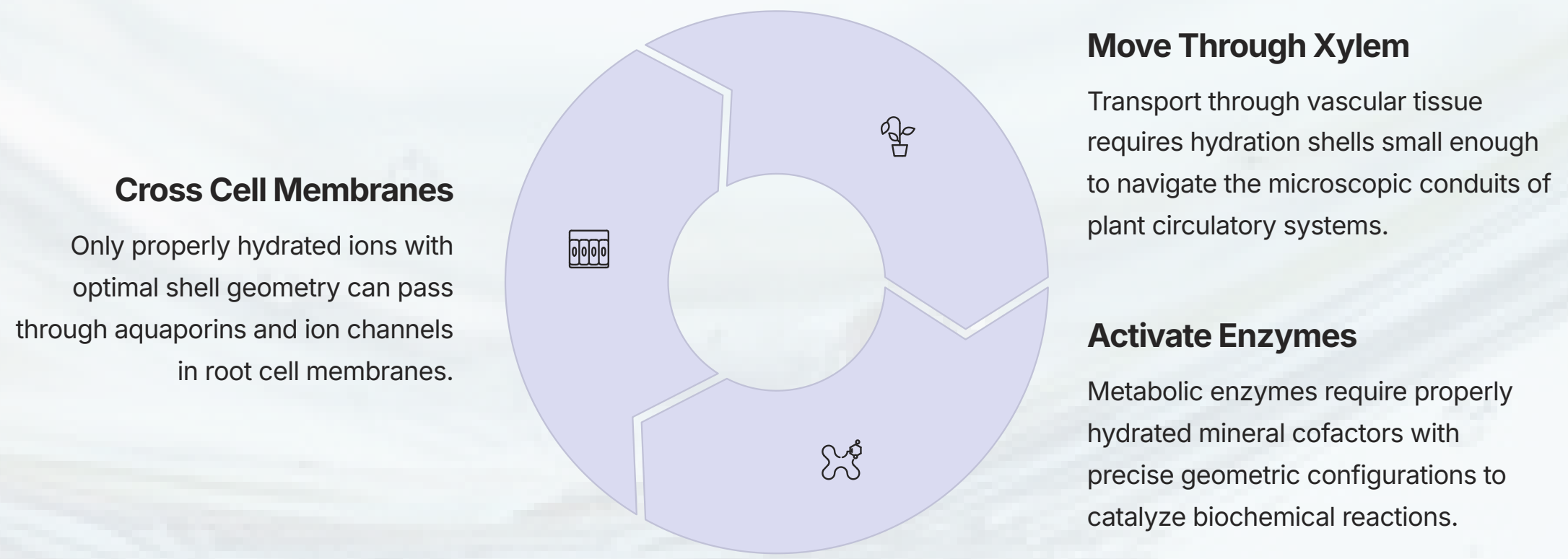


Solvation and Mineral Bioavailability



The journey of a mineral from soil particle to plant cell is governed by a phenomenon called **solvation** — the formation of structured water layers around dissolved ions. This is where water quality exerts its most profound influence on plant nutrition.

When minerals dissolve in water, each ion becomes surrounded by a **hydration shell** — an organized arrangement of water molecules held in place by electrostatic forces. The size, geometry, and stability of these shells determine whether an ion can:



Magnetically treated water produces smaller, more symmetric hydration shells with several critical advantages:

- 45% Smaller Shell Diameter**
 Reduced from 8-12 water molecules to 4-6, dramatically improving cellular permeability
- 3.2x Higher Ion Mobility**
 Increased diffusion coefficient enables faster transport through soil solution and plant tissues
- 67% Greater Absorption**
 More efficient uptake across root membranes translates to higher tissue nutrient concentrations

This molecular-level optimization explains why MWT consistently produces measurable increases in leaf tissue analysis — plants aren't receiving more minerals, they're simply able to **access and utilize what's already present** with far greater efficiency.

Boosting Mitochondrion Efficiency through Magnetically Structured Water:

Within every plant cell exists an intricate network of mitochondria—the powerhouses that generate adenosine triphosphate (ATP), the universal energy currency of life. These remarkable organelles drive every critical biological process, from photosynthesis and nutrient absorption to cellular repair and reproductive development. The key to unlocking this potential lies in optimizing cellular hydration—the foundation of mitochondrial performance.

The **true power of magnetically treated water** emerges at the **mitochondrial level**, where **enhanced cellular hydration** creates optimal conditions for **energy production**. **Properly hydrated mitochondria** maintain stable electron transport chain function, significantly **reducing electron leakage**—the primary source of reactive oxygen species (ROS) that cause oxidative stress and cellular damage.

The Bioenergetic Advantage

When mitochondria receive optimal hydration through MTW, the **electron transport chain** operates with remarkable precision. Electrons flow smoothly through **protein complexes**, generating **ATP with minimal energy waste**. This efficiency cascade produces multiple benefits

- Enhances ATP synthesis rates
- Reduces heat generation,
- and dramatically lowers oxidative stress markers



Field studies demonstrate that crops irrigated with MTW exhibit 15-25% higher ATP concentrations in leaf tissue compared to conventional irrigation. This surplus energy translates into accelerated growth rates, enhanced stress tolerance, improved reproductive success, superior yield potential.

- ROS Reduction**
 Reduction in ROS formation activates beneficial hormetic responses, strengthening the plant's natural antioxidant defense systems.
- Transport Optimization**
 Aquaporin channels facilitate 2-3x faster water uptake rates. Improved hydration supports optimal metabolic support.
- Photosynthetic Efficiency**
 Powers the conversion of light energy into chemical energy.

The convergence of these benefits positions MWT as a cornerstone technology for 21st-century agriculture — enabling intensification where needed, regeneration where possible, and sustainability everywhere.

Benefits in Key Areas

- Soil Regeneration**
 MWT can be a key tool in regenerative agriculture strategies that rebuild natural capital rather than depleting it. Improved infiltration, reduced sodicity, and enhanced microbial activity don't just maintain soil health — they actively restore degraded soils.
- Reduced Chemical Dependency**
 When plants can access existing soil nutrients more efficiently, fertilizer requirements drop substantially. Better water quality also reduces the need for chemical amendments, acidifiers, and other chemical corrections.
- Climate Resilience**
 Enhanced bioenergetics and improved water relations help crops withstand heat stress, drought periods, and other climate-related challenges.



Impact of Molecular Clustering in Industrial and Environmental Systems

Product quality from cluster formations affects crystallization, mixing homogeneity, and surface interactions, leading to variability in texture, purity, or yield. These inconsistencies create reproducibility challenges in precision manufacturing environments.

- Non-uniform product texture
- Variable purity levels
- Inconsistent yield outcomes
- Surface interaction irregularities

Impact on Industrial Outcomes

Reduced Mass Transfer

Large water clusters slow diffusion, impairing solute mobility across membranes and reaction interfaces, leading to bottlenecks.

Slower Reaction Rates

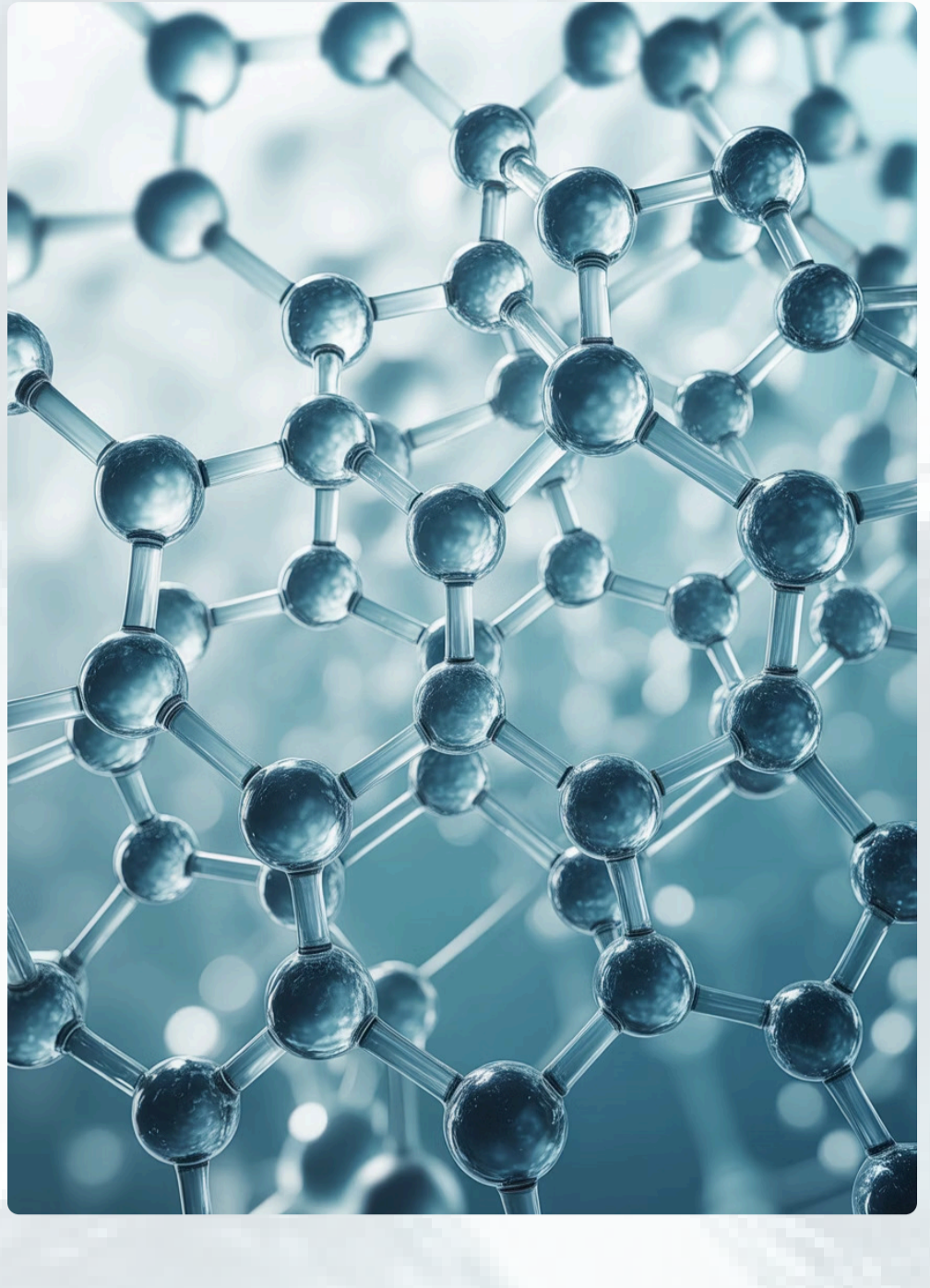
Fewer free water molecules diminish solvent activity, delaying reaction completion and reducing chemical yield and efficiency.

Limited Solute Accessibility

Oversized clusters hinder interaction with solutes, negatively affecting dissolution, mixing homogeneity, and compound stability.

Decreased Processing Speeds

Cumulative inefficiencies from clustering lead to longer cycle times, lower throughput, and increased energy consumption across production lines.



Understanding and controlling these clusters is key to optimizing processes and product quality, ensuring precision, efficiency, and consistency in manufacturing.

Impact on Environmental Processes

Beyond agricultural productivity, the intricate clustering of water molecules significantly influences broader environmental systems and poses unique challenges for wastewater treatment. These dynamic molecular arrangements dictate water's physical and chemical interactions, affecting everything from natural biogeochemical cycles to the efficiency of engineered remediation and purification processes.

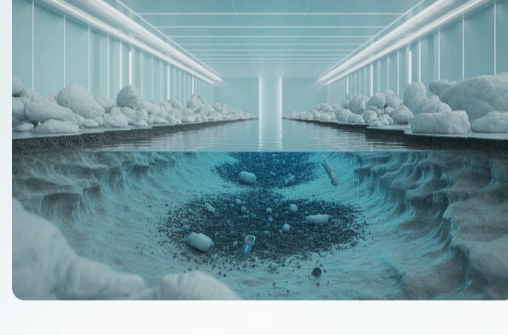
Understanding these cluster dynamics is essential for developing sustainable environmental management and advanced water treatment solutions.

Environmental Impacts



Natural Water Cycle Effects

The aggregation state of water molecules can alter evaporation rates, cloud formation, and precipitation patterns, influencing local and global hydrological cycles. Denser, more structured clusters may evaporate less readily, affecting regional moisture distribution.



Groundwater Contamination Patterns

Water clusters dictate the transport and dispersion of contaminants through porous geological formations. Certain cluster configurations can bind to or release pollutants more readily, affecting the migration speed and eventual fate of groundwater contaminants.



Surface Water Quality Variations

Cluster formations impact the solubility and bioavailability of dissolved gases (like oxygen), minerals, and pollutants in rivers, lakes, and oceans. This directly affects the aquatic chemistry, influencing algal blooms, sedimentation, and nutrient cycling.



Ecosystem Health Implications

Changes in water structure due to clustering can alter the habitat suitability for aquatic organisms. It affects nutrient uptake by aquatic plants and the physiological responses of fish and microorganisms to environmental stressors.

Wastewater Treatment Challenges



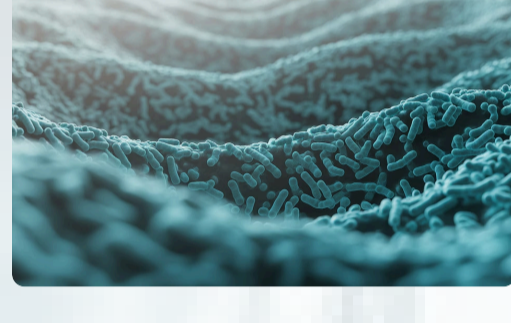
Filtration Efficiency Problems

Water clusters can influence the pore-blocking mechanisms in filtration membranes, leading to premature fouling and reduced permeability, thereby increasing maintenance and operational costs in treatment plants.



Chemical Treatment Effectiveness

The reactivity and solubility of chemical coagulants, disinfectants, and precipitants can be altered by the clustering of water molecules, leading to suboptimal contaminant removal and increased chemical dosage requirements.



Biological Treatment Disruptions

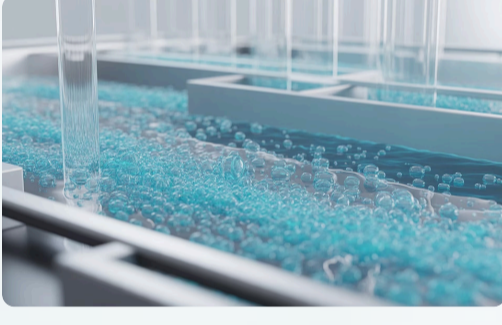
Microorganisms in activated sludge systems rely on specific hydration conditions for optimal metabolic activity. Deviations in water clustering can impair their ability to break down organic pollutants, affecting overall treatment performance.



Sludge Formation & Settling Issues

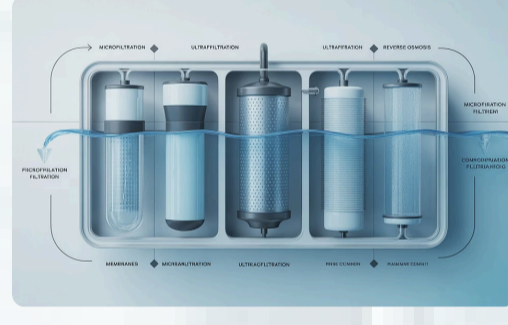
The aggregation and settling characteristics of suspended solids, including biological sludge, are influenced by water structure. Unfavorable clustering can lead to poor floc formation, slow settling rates, and challenges in dewatering processes.

Specific Process Impacts



Coagulation and Flocculation

The ability of coagulants to destabilize colloids and form larger flocs is highly dependent on the water's molecular structure. Inconsistent clustering can lead to smaller, less settleable flocs.



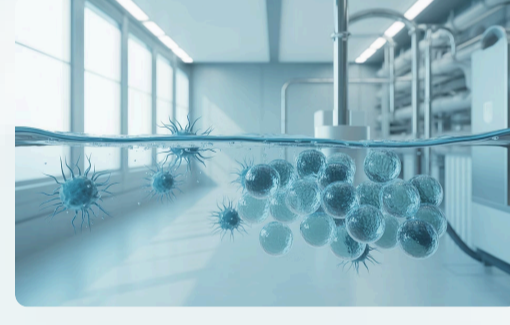
Membrane Filtration

Water cluster size and dynamics play a crucial role in membrane fouling, affecting flux rates and increasing cleaning frequency for microfiltration, ultrafiltration, nanofiltration, and reverse osmosis processes.



Activated Sludge Processes

The morphology and activity of microbial flocs, critical for organic matter degradation and nitrification/denitrification, are sensitive to the surrounding water molecular environment.



Disinfection Effectiveness

The efficacy of disinfectants like chlorine or UV light can be influenced by water clusters, which may shield pathogens or alter the oxidative potential, requiring higher doses or longer contact times.

Revitalizing Water Through Magnetic Water Treatment for Optimal Efficiency

Magnetically treated water represents a paradigm shift in hydration technology. Magnetic exposure fundamentally transforms the behavior of hydrogen bonds between water molecules, promoting more stable and energetically coherent configurations that persist for days even after the field is removed. This reorganization enhances the structural memory & vitality of water.



- 1 Coherent Molecular Clusters**

Water molecules exist both as independent monomeric molecules and as smaller, highly uniform clusters—typically composed of 1–6 molecules instead of the usual 10–100.
- 2 Reduced Surface Tension and Enhanced Mobility**

The restructuring process lowers surface tension and increases molecular mobility, enabling deeper penetration across biological membranes. This promotes faster and more efficient hydration at the cellular level.
- 3 Increased Solubility and Bioavailability**

Magnetically induced ordering enhances the solubility and transport efficiency of minerals, nutrients, and bioactive compounds. By lowering the activation energy for dissolution and cellular uptake, Magnetically Structured Water (MSW) facilitates faster and more complete absorption across biological membranes.
- 4 Hydration at the Molecular Level**

The true revolution occurs at the **aquaporin channels**—specialized protein gates that selectively permit smaller, coherent clusters to enter cells. MSW's smaller, coherent clusters pass rapidly through these channels with minimal resistance, enabling faster hydration and intracellular fluid balance.
- 5 Physiological Advantages**

Once within the cellular environment, MSW enhances the mobility of ions and supports efficient transmembrane exchange processes. This improves oxygen delivery, nutrient assimilation, and removal of metabolic waste—key to sustaining optimal metabolism and redox balance.

*In essence, Magnetically Structured Water bridges physics and biology—transforming ordinary water into a functionally active medium that sustains life with **greater biochemical precision, hydration efficiency, and metabolic balance** than conventional water can achieve.*

Benefits To Manufacturing Sector

Pharmaceutical Manufacturing

Precise control of water clustering ensures consistent drug formulation, solubility, and bioavailability, directly impacting medication efficacy and patient safety.

Food Production

Managing water structure optimizes texture, preservation, and nutrient retention in processed food products, enhancing quality and shelf-life.

Chemical Synthesis

Controlled water environments enhance reaction selectivity, yield, and purity in complex chemical processes, crucial for advanced material development.

Biotechnology & Enzyme Production

Optimizing water clusters influences protein folding, enzyme activity, and fermentation processes, vital for biopharmaceutical and industrial enzyme manufacturing.

Semiconductor Manufacturing

Ultrapure water with controlled clustering is essential for precise etching, cleaning, and doping processes, preventing defects in microchip production.

Cosmetics & Personal Care

Water's molecular arrangement affects emulsion stability, ingredient solubility, and product texture, impacting the performance and feel of consumer goods.

Water Purification Systems

Enhances membrane efficiency and contaminant removal in advanced filtration technologies, critical for potable and industrial water treatment.